



Moorabool

Shire Council

Request for Expressions of Interest to develop
Wadawurrung artwork for the Ballan Library and
Community Hub

August 2024

ACKNOWLEDGEMENT OF COUNTRY

Moorabool Shire Council respectfully acknowledges the Traditional Owners of the land which includes the Wurundjeri Woi Wurrung, Wadawurrung and Dja Dja Wurrung people. We pay our respects to the Elders past, present and emerging.

1. Project Information

1.1 INTRODUCTION

Moorabool Shire Council is inviting Expressions of Interest from Wadawurrung artists to create a permanent artwork that celebrates and communicates the culture of the Wadawurrung Traditional Owners, for the new Ballan Library and Community Hub.

To ensure a genuine and culturally appropriate Artwork Commission, this opportunity is limited to Expressions of Interest from Wadawurrung artists or groups led by Wadawurrung artists.

KEY DATES

EOIs open: 28 August 2024

EOIs close: COB 10 September 2024

Shortlisting, Concept Presentation, Artist Selection: September 2024

Artwork Design and Development: October – November 2024

Artwork creation: November 2024 – May 2025

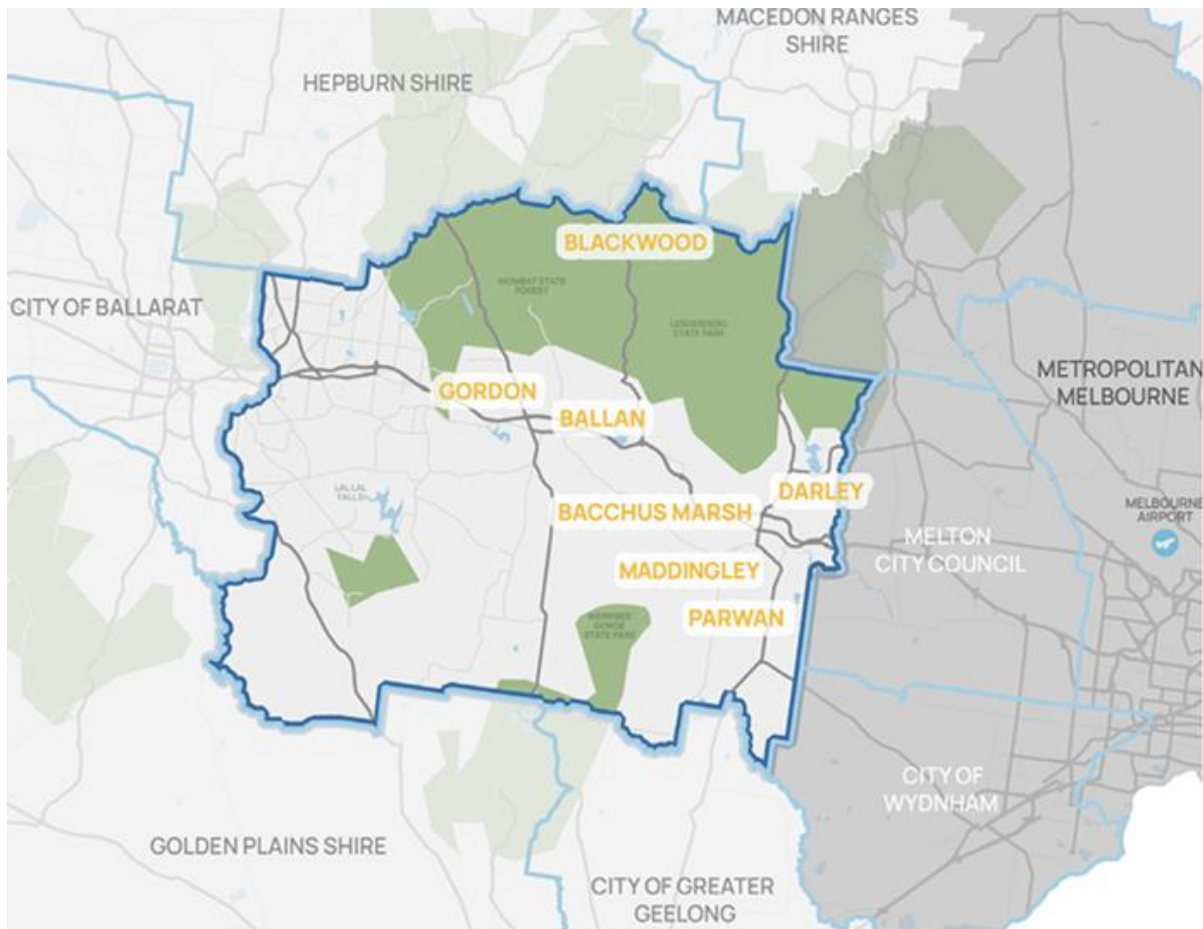
Artwork Installation: June 2025

1.2 MOORABOOL SHIRE COUNCIL

Moorabool Shire is situated to the west of metropolitan Melbourne, encompassing an area of over 2,110 square kilometres and home to over 36,000 residents. As shown in the adjacent map, Moorabool Shire is strategically located at the gateway to western regional Victoria, between metropolitan Melbourne and the regional centres of Geelong and Ballarat. The municipality is comprised of 64 localities, hamlets and towns, including the key urban centres of Bacchus Marsh and Ballan. Most settlements are small and rural towns provide support and services for local industry, residents and visitors.

The municipality is a 'Peri-Urban' Council experiencing rapid urban and population growth, particularly in the eastern region of the Shire – across Bacchus Marsh and Ballan – with the number of residents expected to almost double in the next 20 years. This urban development

contrasts with the large tracts of rural land and traditional agricultural sector, as well as the large volume of land (74%) comprising water catchments, State Forests, State Parks and National Parks. The collection of natural assets and peri-urban environment creates significant lifestyle and economic benefits for residents, businesses and visitors.



1.3 SITE INFORMATION

Moorabool Shire is constructing a new library and civic plaza located at 127 Inglis Street, Ballan.

Key design features include:

- Library services;
- Designated areas for youth and children
- Maternal and Child Health services
- Art exhibition space
- Visitor information centre and community meeting rooms.

The Ballan Library and Community Hub is designed by architects Croxon Ramsay, with construction contracted to Nicholson Construction.

Works to demolish the former Commonwealth Bank site commenced in June 2024 and the construction of the new library is anticipated to be complete in August 2025.

Concept Plans for the Ballan Library and Community Hub were developed to meet the operational needs and desire for a contemporary library and community hub for Ballan and surrounding areas. The design responds to the aspirations of the local community and is responsive to feedback gained during the community engagement process, as well as meeting budget parameters.



Image courtesy Croxon Ramsay and Moorabool Shire Council.

2. Artwork Commission

2.1 COMMISSION OVERVIEW

As a significant addition to community infrastructure in Ballan, the Ballan Library and Community Hub is intended to be a key gathering place, a place for respite, learning and knowledge exchange. It is a place that celebrates, cares for and provides access to stories and knowledge.

As such, the Artwork Commission is an opportunity to celebrate and acknowledge the Traditional Owners of the land of Ballan, the Wadawurrung peoples, and their rich culture that continues to be practiced on Country.

It is anticipated that the Artwork Commission will contribute to the experience of the Ballan Library and Community Hub, and ensure visitors are welcomed in a manner that situates Wadawurrung culture as central to shared values that underpin this new space, such as:

- Language
- Knowledge
- Gathering
- Sharing
- Respect
- Care

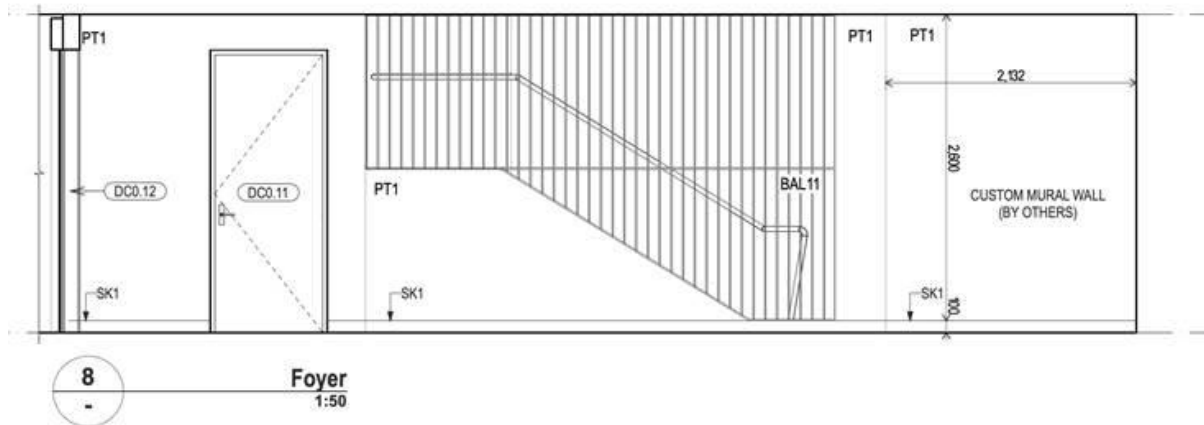
2.2 ARTWORK SCALE

The Artwork Commission will be located on a dedicated wall in the foyer area of the Library and Community Hub.

The dimensions of the allocated wall are 2,132 mm x 2,600 mm and the Artwork will be required to fit within this area.

Additional considerations may be required depending on the nature of the Artwork and unforeseen alterations to the site.

The location of the Artwork and elevations of the wall are available as part of the Expression of Interest process (see Support Material).



2.3 MATERIALITY & FORM

The preference for the work is a static, non-digital artwork. Beyond this, the form and medium of the artwork is open-ended, provided the work responds to the overall intent of the commission, and any constraints and opportunities presented by the site.

The artwork materials and form should consider the safety of the public, as the site can be accessed directly by visitors, and the members of the public may wish to engage directly with the work.

Materials and finishes should be carefully considered in terms of longevity, durability and minimising maintenance costs. As a rule of thumb, the artwork should be capable of being on display for a minimum of ten years without requiring demounting, repair or conservation to remain presentable over this period.

3. Artist Selection

3.1 SELECTION PROCESS

Successful artist/s will be selected in a two-stage process outlined below.

Stage 1 – Expression of Interest

All interested artists and collectives are invited to submit the following to arts@moorabool.vic.gov.au by **COB 10 September 2024**.

- A CV
- Up to five (5) images of previous related work
- A short statement on your approach developing the Artwork.

Moorabool Shire Council's Public Art and Collections Advisory Committee (PACAC) is made up of industry professionals and community representatives. The PACAC will review submissions and select those to proceed to Stage 2.

Stage 2 – Concept Presentation

Shortlisted artists will be invited to develop their ideas and submit a Concept Presentation, which will include the concept of their proposed artwork, noting its materials and budget. Council will confirm the successful artist, with the support of the PACAC, for the commission based on the submitted Concept Presentations.

3.2 ASSESSMENT CRITERIA

Proposals will be assessed by how well they:

- Engage with and communicate Wadawurrung culture to visitors.
- Celebrate Wadawurrung culture and identity with pride.
- Encourage visitation and engagement.
- Inspire connection to the Ballan Library and Community Hub.
- Past experience and standing of artist(s).
- Specify appropriate materials to ensure durability and minimal maintenance.
- Reflect good value and use of budget and resources.

4. Artwork Development

4.1 ARTWORK DESIGN & EXECUTION

The successful artist/s will work with Council to produce documentation outlining design of the artwork, materials, execution approach and costs, placement, installation process and maintenance requirements.

- Moorabool Council will provide the following:
Briefings and integration with project design team/architects/landscape designers
- Site preparation
- Interpretive signage and material
- A professional services contract will be issued to the artist/s by Moorabool Council on awarding of Artwork Commission.

This brief has been prepared in accordance with the National Association of Visual Arts (NAVA)'s *Best Practice: Commissioning Art in Public Space* guidelines and responds to feedback from the Wadawurrung Traditional Owners Aboriginal Corporation.

4.2 ARTWORK COMMISSION FEES

Stage 1, Expression of Interest: No fees or costs are provided in this stage

Stage 2, Concept Presentation: Each shortlisted artist/s will be paid an all-inclusive fee of \$1,000 (ex-GST) to develop and submit a Concept Presentation.

Stage 3, Artwork Development and Execution: There is an all-in budget allocation of \$18,000 (ex-GST) for this stage, to include:

- Concept origination
- Ownership, moral right and copyright
- Meeting time and expenses
- Travel and accommodation expenses (if applicable)
- Administrative expenses
- Insurances
- Further Artwork Development within site requirements
- Collaboration with Project Team
- Materials
- Fabrication and Installation
- Transportation
- Freight

5. Support Material

Ballan Library and Community Hub project webpage

<https://www.moorabool.vic.gov.au/Building-and-planning/Moorabuild-projects-and-works/Ballan-Library-and-Community-Hub>

Ballan Library and Community Hub plans – Artwork location and elevation

<https://bit.ly/3Y0lhhP>